

What's a Cracked Tooth?

One of the most common dilemmas we face in dentistry is a cracked tooth.

Teeth withstand a great deal of force day after day, year after year. Occasionally, all that pressure will cause a crack to develop in a tooth. This is most often seen in weaker teeth, such as those with large fillings or decay.

Although many crack lines can be visualized on our teeth, they are usually superficial and not a concern. Larger, pain-inducing cracks tend to begin internally, such as underneath an old filling where they are not visible on the surface of the tooth. They will continue to grow either until the tooth is treated, fractures, or splits.

What are the symptoms of a cracked tooth?

Symptoms can present differently in every person, but the most common symptoms are:

- Pain to biting
- Pain with temperatures

These symptoms can be tested at the dental office and, along with a thorough exam, are reliable indicators of a cracked tooth.

What is the treatment for a crack?

The treatment will depend on the type and extent of the crack. In most cases, a full coverage crown will contain the crack, prevent further damage, and eliminate the symptoms. Very superficial cracks may be repaired with a bonded resin. If the crack has disturbed the pulp tissue to an irreversible state, a root canal will also be needed. In rare cases, the tooth will split extensively and be unrestorable. Unfortunately, these teeth must be extracted.

ADDITIONAL QUESTIONS? PLEASE DO
NOT HESITATE TO CALL OR EMAIL US!
(205)823-2355
JAMESAMPSONDMD@GMAIL.COM

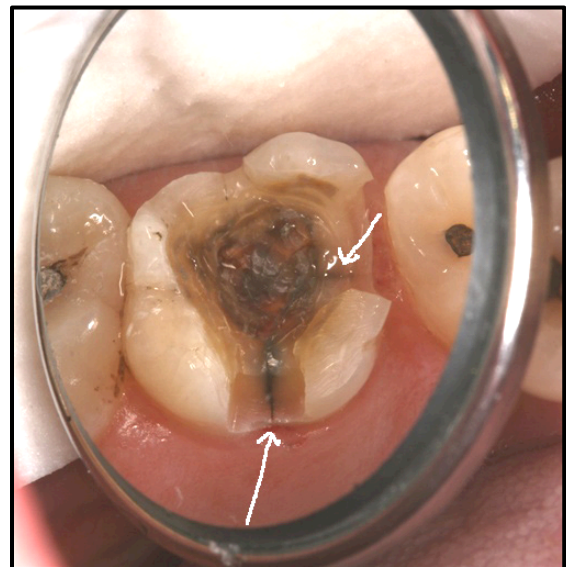


Photo shows a crack that was underneath a large filling.